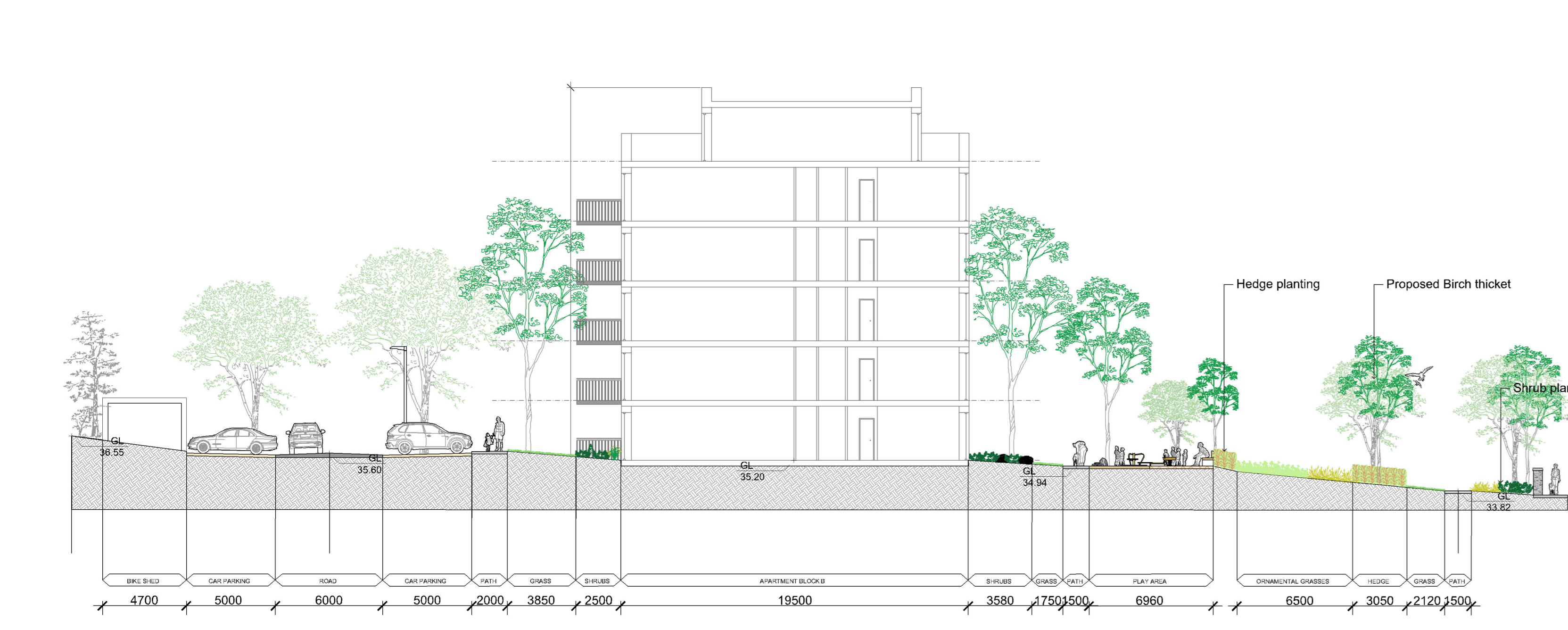




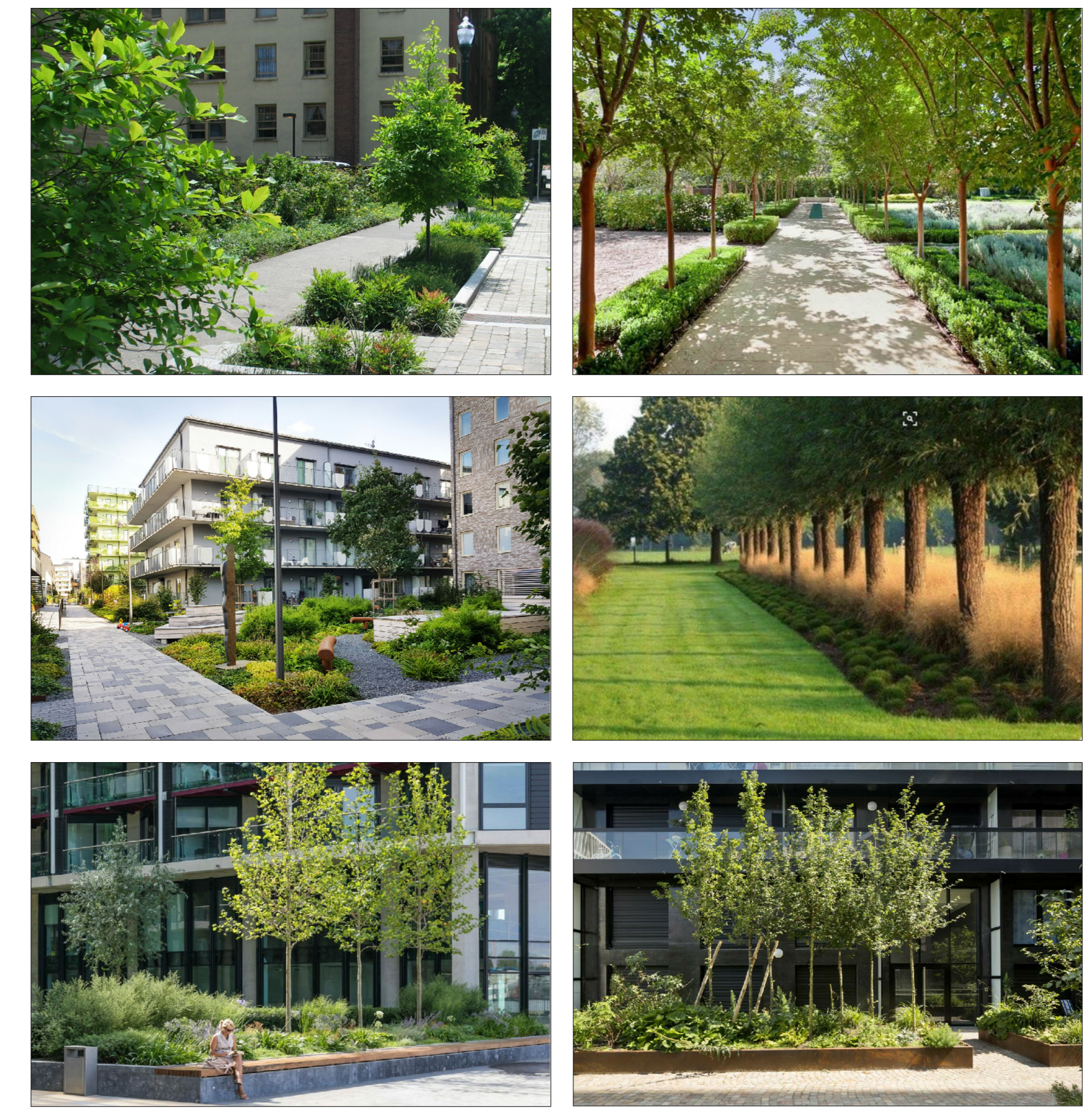
ACADEMY PARK, PLAN VIEW
SC. 1:200



ACADEMY PARK, SECTION
SC. 1:200

Academy Park
Academy Park is a linear urban park that runs parallel with Academy Street. The design reflects the linearity of the river valley through its strips of grasslands and meadows punctuated with trees. People walking into Navan can choose to take a direct route through the park away from the main road. Residents can cut through the park on their way to and from home.

Communal spaces are located close to the apartments, each furnished with their own semi-private play space



ACADEMY PARK, INDICATIVE IMAGES

LEGEND:
NOTE: for details of materials & planting see drawing 18221-2-103

GENERAL

- Existing Trees/Group of Tre
- Proposed Building

PROPOSED PLANTING AND HABITATS

- Parkland Trees
- Street Trees
- Small to Medium Garden Tre
- Orchard Trees
- Birch Thickets
- Amenity / Private Grass
- Low / Medium height shrub
- Hedge
- Mixed Native Woodland Pla
- Ornamental Grasses + Plan
- Bulb Planting / Long grass
- Landform
- Swale

PROPOSED HARD ELEMENTS

- Tarmac Road
- Concrete Footpath
- Raised Table
- Tactile Paving
- Rooted Dust/Gravel Path
- PCC Pavers for Vehicular/Pedestrian

PROPOSED PLAY AREAS

- Shared surface-Coloured terrac
- Cycle way
- Parking Bay and Threshold Paving
- PCC sets
- Abatement area
- 1.2m high vertical bar railing
- Rubber / Woodchip Play surface
- Sand area in Playground
- Boardwalk Play Features
- Balance Beams
- Informal Play: Boulders, Mounds
- Play Equipment
- Fitness Trail Equipment

PROPOSED FURNITURE & STRUCTURES

- Coursed gabion retaining walls
- 1. Bike Stands
- 2. Bin Shed
- 3. Bins
- Indicative location of substation u
- Street Lighting
- Pumping station
- 1. Timber Bench
- 2. Concrete Wall/Seat

KEY PLAN NTS

NOTE:
- DRAWING ISSUED FOR PLANNING PURPOSE ONLY.
LANDSCAPE IS SUBJECT TO APPROVAL OF THE PLANNING AUTHORITY

REV	DATE	AMENDMENT
A	14/11/2019	PLANNING ISSUE

**CUNNANE STRATTON REYNOLDS
LAND PLANNING & DESIGN**

DUBLIN OFFICE
3 MOLESWORTH PLACE DUBLIN 2
TEL: 01 851 0415 FAX: 01 851 0431
EMAIL: info@cslrdnplan.ie

PROJECT:
BELMONT RESIDENTIAL
DEVELOPMENT
ACADEMY STREET, NAVAN, CO MEATH

DATE: October 2019

SCALE: 1/200@A0

DRAWN: DC
CHECKED: EO

DRAWING NO: 18221-2-401

Drawing to be read with the accompanying Landscape Strategy and Design Report 18221-D-004.
Annotation of places relates to neighborhoods defined in the Landscape Strategy and Design Report.